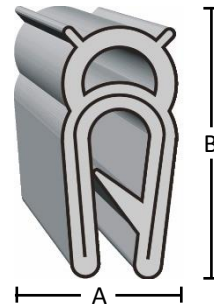


Edge protection profiles are installed by simply being pressed into position on the edges and are mounted by a clamping effect. No adhesive is required.

The core of the profiles is made of expanded rubber and is covered with a copper-nickel fabric (CuNi).

The edge protection profiles have an embedded steel insert and a U-shaped section. They are extremely flexible.

- Including looped wire carrier and hollow sponge sealing section
- Excellent shielding effectiveness
- Simple to assemble; no adhesive required
- Resistant to a temperature range from -30 to 80°C
- Available in different lengths and also on roll



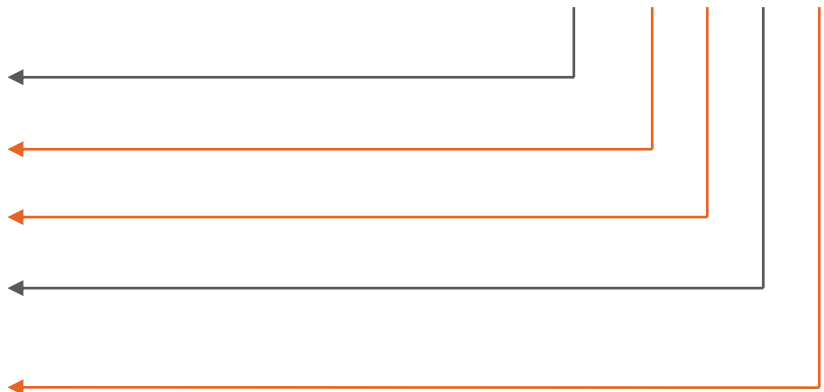
PRODUCT SPECIFICATIONS

PROPERTY	VALUE / TOLERANCE	TEST METHOD
Basic material	Black EPDM	-
Fabric	CuNi plated nylon	-
Width (A)	8,0 mm	-
Height (B)	16,0 mm	-
Surface resistance	<0,05 Ω/□	-
Shielding effectiveness	80 – 90 dB @ 100 MHz - 18 GHz	ASTM D-4935-89
Flammability rating	HB (only valid for basic material)	UL 94
Temperature range	-25 – 80 °C	-

BUILDING AN ITEM NUMBER

DAU-HxW NI-L

Edge Protector Profile	
xx	Height (mm)
xx	Width (mm)
Fabric, CuNi coated	
xxxx	Length (mm)
Rxx	On roll (m)



Standard options

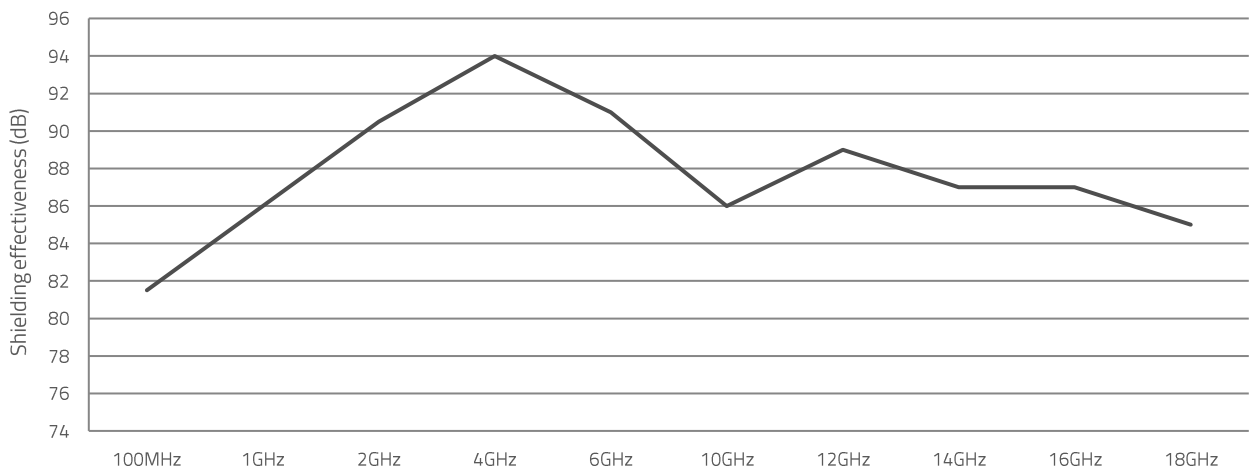
EXAMPLE

DAU16x8NI-R10

Edge protector profile; height: 16 mm; width: 8 mm; fabric, nickel coated; on 10 m roll

SHIELDING EFFECTIVENESS

CuNi coated fabric



Modifications and errors excepted. The information and statements herein are believed to be reliable but are not to be construed as a warranty or representation for which we assume legal responsibility. Users should undertake sufficient verifications and testings to determine the suitability for their own particular purpose of any information or products referred to herein.