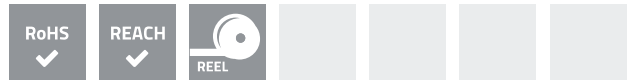


SMD contact springs are ideal for automatic assembly on printed circuit boards. They are soldered by the standard-reflow-soldering process.

The standard basic material used for SMD contact springs is copper beryllium (CuBe). However, other materials can also be supplied.

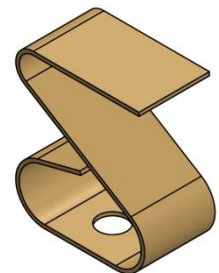
As standard, SMD springs are gold-plated (AU). They can be supplied in a wide range of dimensions and shapes.

- Ideal for automatic assembly
- Standard basic material: CuBe, stainless steel
- Standard plating: AU
- Available in different dimensions and types
- Almost unlimited working life

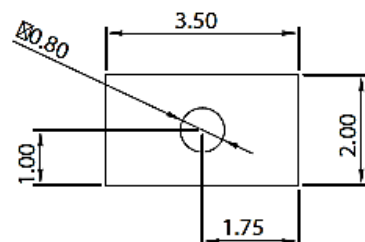
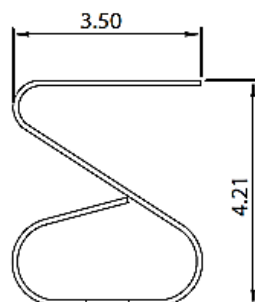
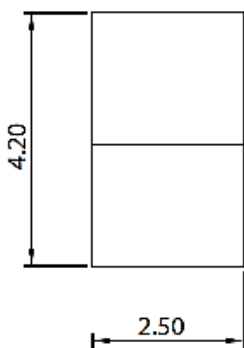


### PRODUCT SPECIFICATIONS

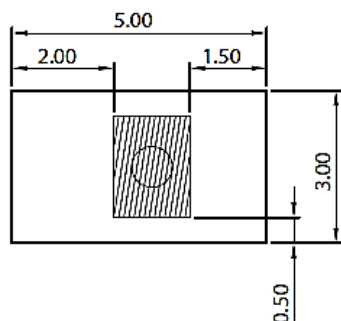
PROPERTY		VALUE / TOLERANCE
Thickness		0,1 mm
Width		2,0 mm ± 0,2
Length		3,5 mm ± 0,2
Height		4,2 mm ± 0,2
Basic material		Stainless steel
Plating	Barrier layer NI Outer layer AU	1µm – 2µm 0,025µm – 0,075µm



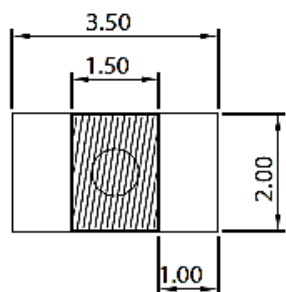
### DIMENSIONS (mm)



**RECOMMENDED RESERVED AREA ON THE PCB (mm)**



**RECOMMENDED PAD FOR THE PCB (mm)**



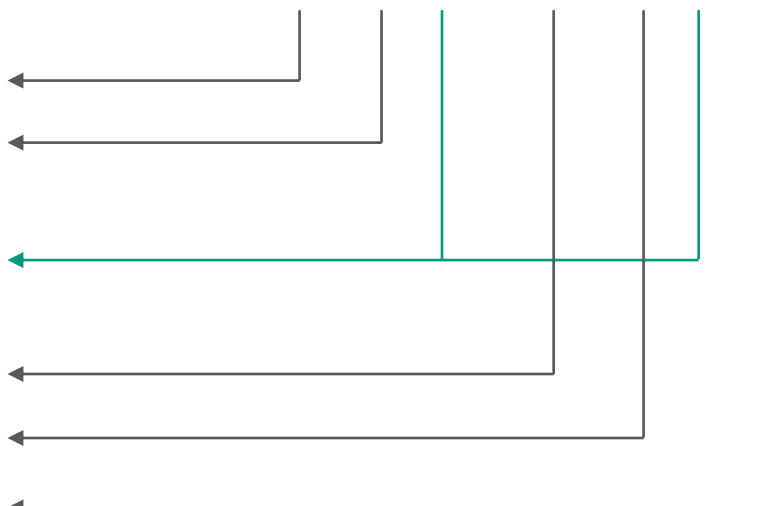
**DISCLAIMER**

This is only a recommendation based on information available to mtc at the time of printing. Actual land pattern can be significantly different due to various materials and processes used in PCB assembly. mtc makes no representation or warranty of performance based on the recommended land pattern.

**BUILDING AN ITEM NUMBER**

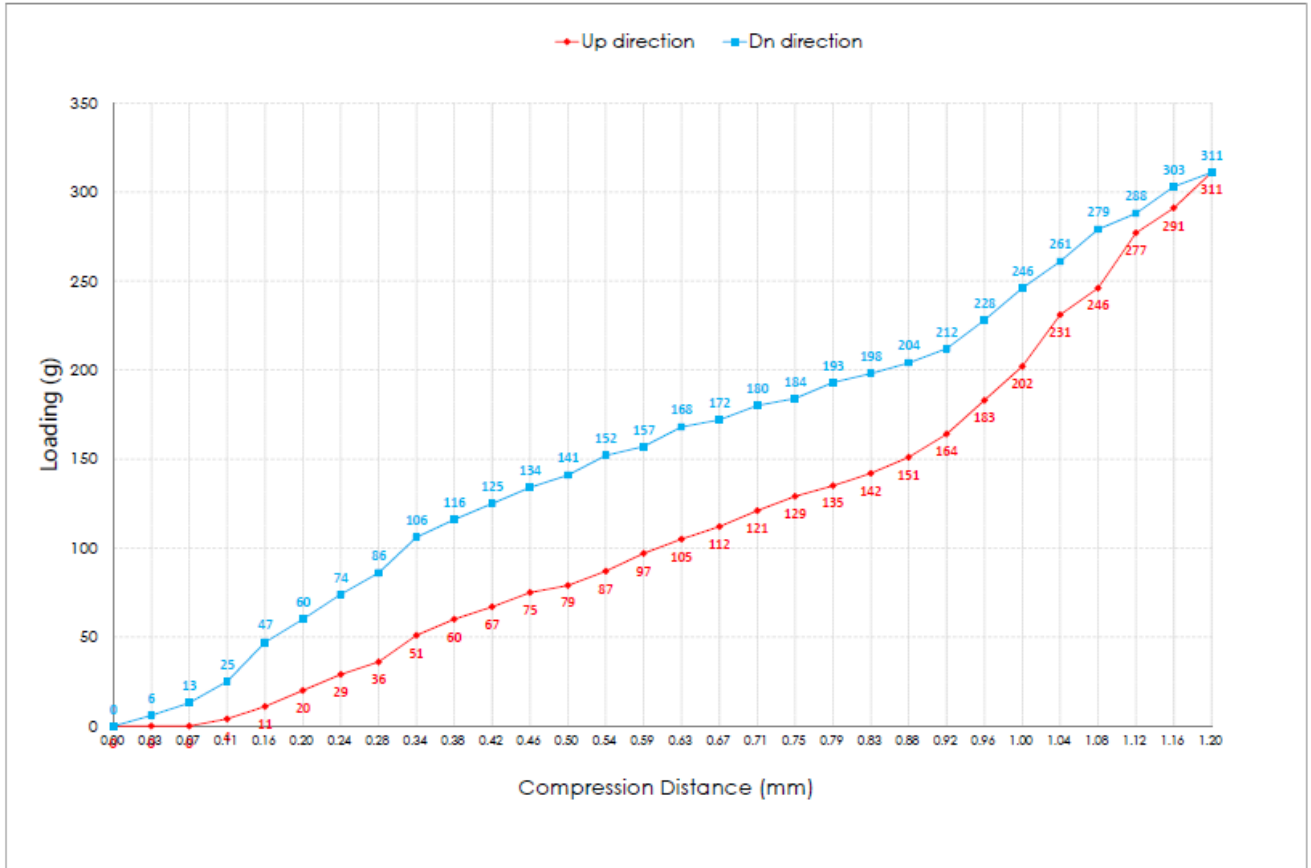
**FCB-205X2035042S-YY-SMD**

Contact Spring	
Type number	
G/AU	Gold-plated
S/SN	Tin-plated
A/AG	Silver-plated
Dimensions	
Stainless steel	
SMD type	



**Standard options**

**FORCE DEFLECTION DIAGRAM\***

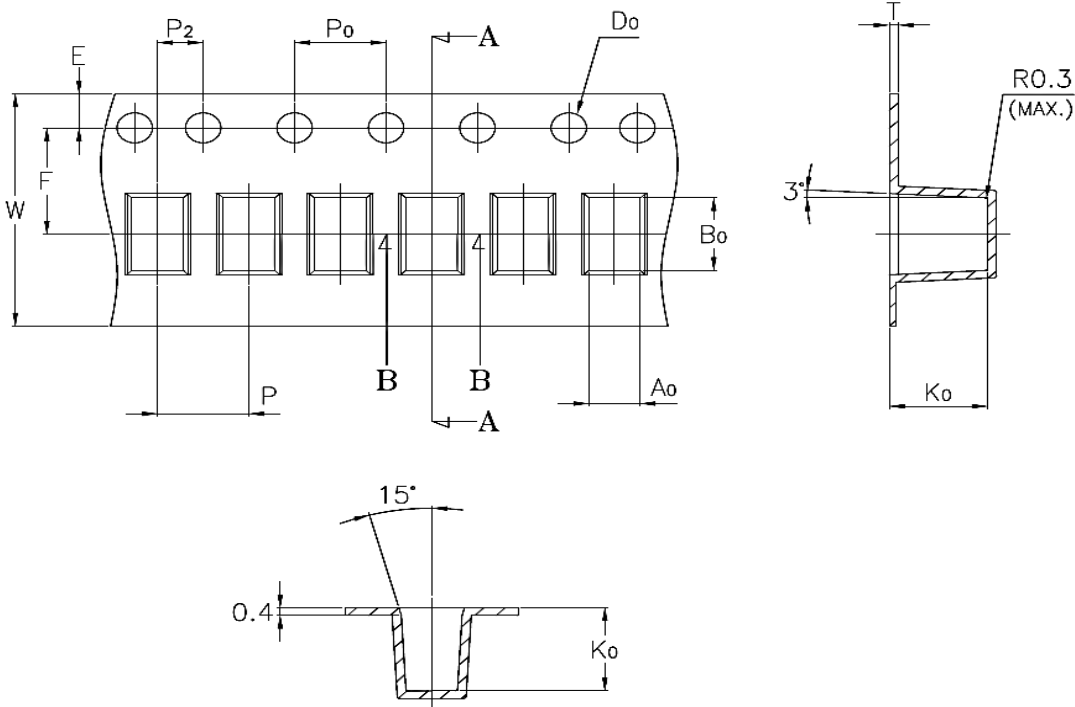


Total Compression Distance(mm)	1.20mm	
	Down direction	UP direction
0.00	0	0
0.03	6	0
0.07	13	0
0.11	25	4
0.16	47	11
0.20	60	20
0.24	74	29
0.28	86	36
0.34	106	51
0.38	116	60
0.42	125	67
0.46	134	75
0.50	141	79
0.54	152	87
0.59	157	97
0.63	168	105

Total Compression Distance(mm)	1.20mm	
	Down direction	UP direction
0.67	172	112
0.71	180	121
0.75	184	129
0.79	193	135
0.83	198	142
0.88	204	151
0.92	212	164
0.96	228	183
1.00	246	202
1.04	261	231
1.08	279	246
1.12	288	277
1.16	303	291
1.20	311	311

**NOTE** | \* Only valid for gold-plated version

**PACKING SPECIFICATION – TAPE AND REEL (mm)**



	W	A <sub>0</sub>	B <sub>0</sub>	K <sub>0</sub>	P	F	E	D	P <sub>0</sub>	P <sub>2</sub>	T
	12,00	2,25	3,75	4,30	4,00	5,50	1,75	∅ 1,50	4,00	2,00	0,40
Tolerance	+ 0,30 - 0,35	± 0,15	± 0,15	± 0,15	± 0,10	± 0,10	± 0,10	+ 0,10 - 0,00	± 0,10	± 0,10	± 0,05

- 10 sprocket hole pitch cumulative tolerance ± 0,20 mm.
- Carrier camber not to exceed 1mm in 100 mm.
- A<sub>0</sub> and B<sub>0</sub> measured on a plane 0,3 mm above the bottom of the pocket.
- K<sub>0</sub> measured from a plane on the inside bottom of the pocket to the top surface of the carrier.
- All dimensions meet EIA-481-3 requirements.
- Material: Transparent Anti-static Polystyrene.
- Component load per 13" reel: 2.500 pcs.

Modifications and errors excepted. The information and statements herein are believed to be reliable but are not to be construed as a warranty or representation for which we assume legal responsibility. Users should undertake sufficient verifications and testings to determine the suitability for their own particular purpose of any information or products referred to herein.