

SMD CONTACT SPRINGS

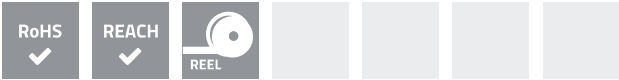
FCB-24YG3236012T-AU-SMD

SMD contact springs are ideal for automatic assembly on printed circuit boards. They are soldered by the standard-reflow-soldering process.

The standard basic material used for SMD contact springs is copper beryllium (CuBe). However, other materials can also be supplied.

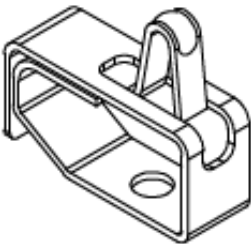
As standard, SMD springs are gold-plated (AU). They can be supplied in a wide range of dimensions and shapes.

- Ideal for automatic assembly
- Standard basic material: CuBe
- Standard plating: AU
- Available in different dimensions and types
- Almost unlimited working life

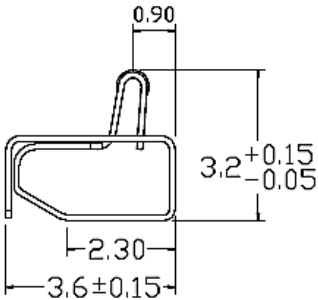
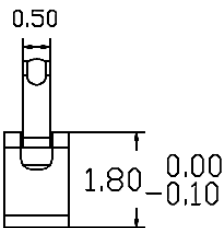
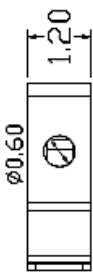


PRODUCT SPECIFICATIONS

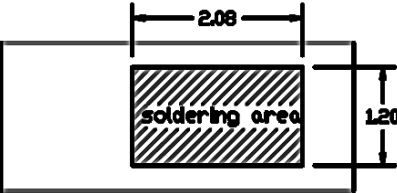
PROPERTY		VALUE / TOLERANCE
Thickness		0,12 mm
Width		1,20 mm ± 0,10
Length		3,60 mm ± 0,15
Height		3,20 mm +0,10 / -0,05
Basic material		Titanium copper
Plating	Barrier layer NI Outer layer AU	1,25µm – 3,00µm 0,025µm



DIMENSIONS (mm)



RECOMMENDED RESERVED AREA ON THE PCB (mm)

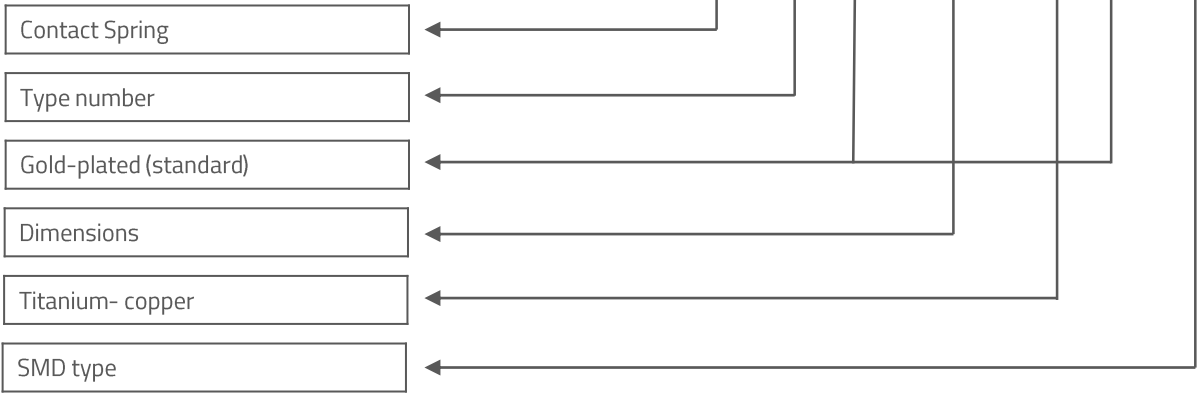


DISCLAIMER

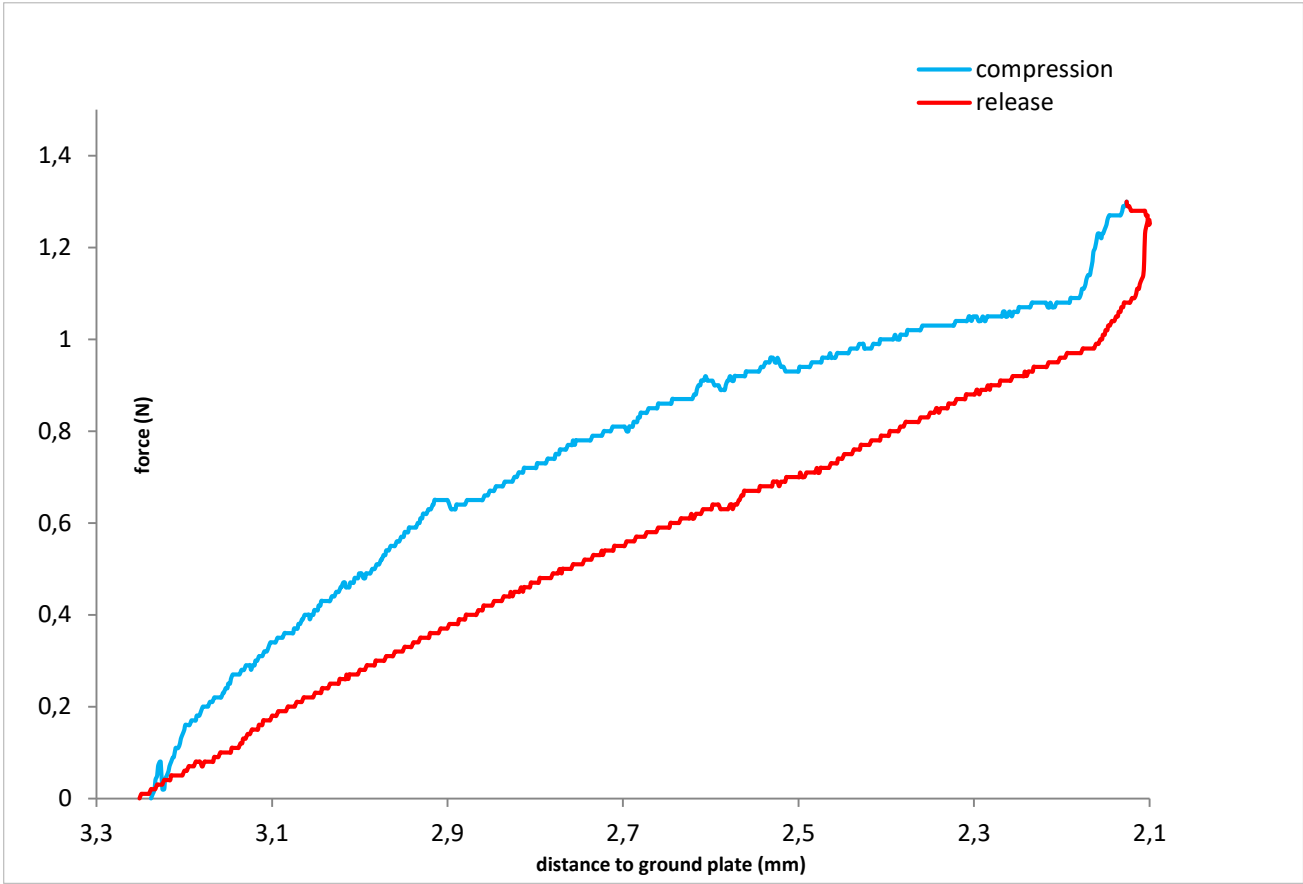
This is only a recommendation based on information available to mtc at the time of printing. Actual land pattern can be significantly different due to various materials and processes used in PCB assembly. mtc makes no representation or warranty of performance based on the recommended land pattern.

BUILDING AN ITEM NUMBER

FCB-24YG3236012T-AU-SMD

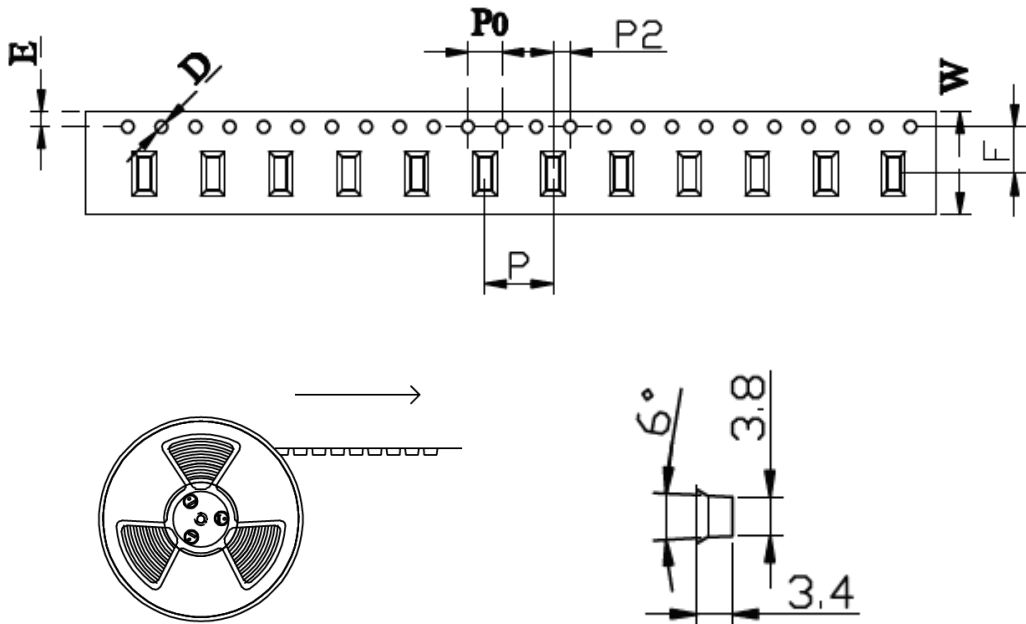


FORCE DEFLECTION DIAGRAM*



NOTE | * Only valid for gold-plated version

PACKING SPECIFICATION – TAPE AND REEL (mm)



	W	A ₀	B ₀	K ₀	K ₁	P	E	F	D	D ₁	P ₀	P ₂
	12,00	1,40	3,80	3,40	0,00	8,00	1,75	5,50	1,50	0,00	4,00	2,00
Tolerance	± 0,30	± 0,10	± 0,10	± 0,10	± 0,10	± 0,10	± 0,10	± 0,10	+ 0,10 - 0,00	+ 0,25 - 0,0	± 0,10	± 0,10

- 10 sprocket hole pitch cumulative tolerance ± 0,2
- Carrier camber is 1 mm in 100 mm
- A₀ and B₀ measured on a plane 0,3 mm above the bottom of the pocket
- K₀ measured from a plane on the inside bottom of the pocket to the top surface of the carrier
- All dimensions meet EIA-481-3 requirements
- 13"1R = 21 m, 2.500 pcs