

# SHIELDING CLIP

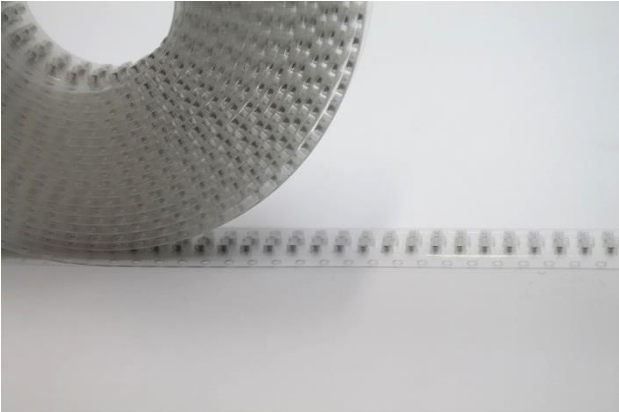
SC-6,50x0,80x1,27-TC-0,15

SMD-compatible **shielding** clips offer the advantage that they can be installed individually on the printed circuit board (PCB) and thus establish a „fitting“ for the shielding cover.

Depending on the size of the area to shield the usage of one or more clips per side is recommended.

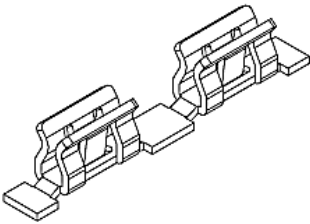
Shielding clips are made of tin plated steel and are supplied on belt.

- Individual installation on the PCB
- SMD placeable
- Delivery on belt
- Basic material: tin plated steel

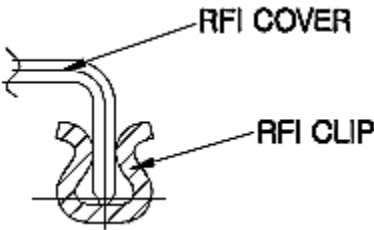


## PRODUCT SPECIFICATIONS

PROPERTY	VALUE	
Thickness	0,15 mm	
Length	6,50 mm	
Width	0,80 mm	
Height	1,27 mm	
Basic material	SUS301 3/4H	
Plating	Tin all over	
General tolerances	x,x	± 0,2 mm
	x,xx	± 0,1 mm

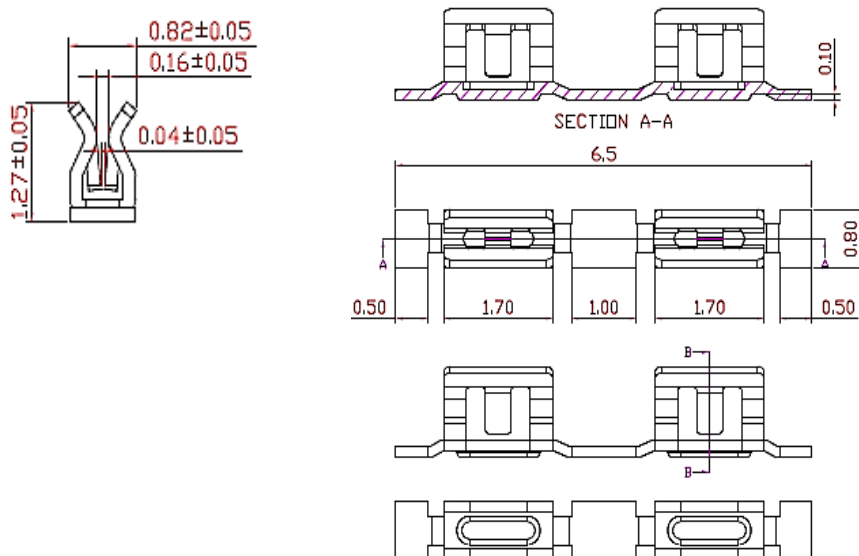
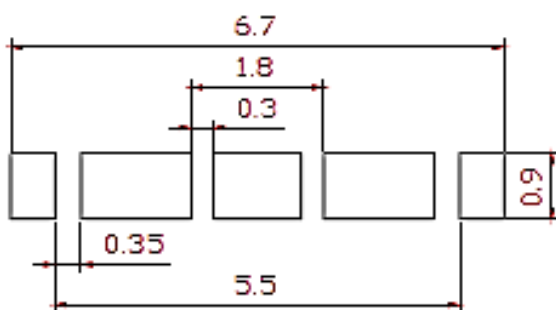


## COVER INSTALLED

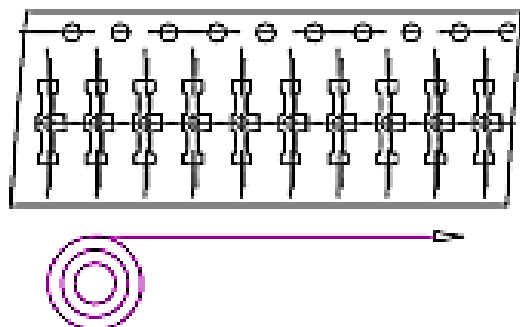


**SHIELDING CLIP**

SC-6,50x0,80x1,27-TC-0,15

**DIMENSIONS (mm)****RECOMMENDED FOOTPRINT (mm)****DISCLAIMER**

This is only a recommendation based on information available to mtc at the time of printing. Actual land pattern can be significantly different due to various materials and processes used in PCB assembly. mtc makes no representation or warranty of performance based on the recommended land pattern.

**PACKING SPECIFICATION**

- 13" reel, W16mm
- Quantity/reel: 10.000 pcs
- Weight/reel: 621,8 g